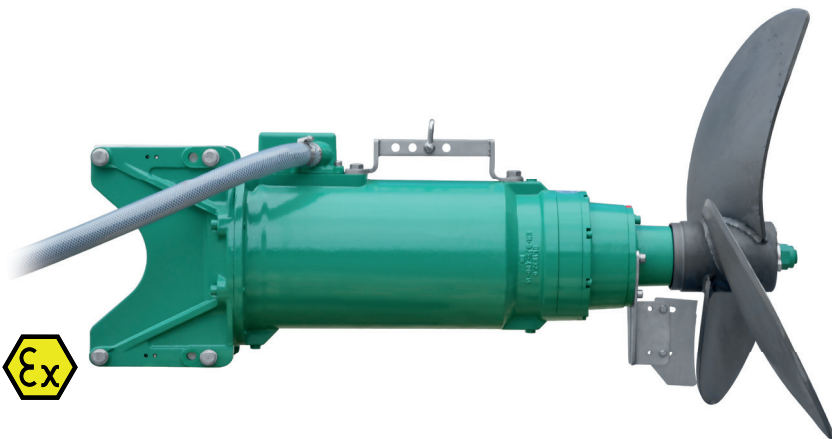




Submersible motor OPTIMIX 3G 250-270



Powerful
Flexible application
High efficiency

Application

Dry matter content up to 12 %
Substrate temperature up to 55°C
pH-value 6.5 - 8.2

Motor

Motor power: 25.0 kW
Protection class IP 68, up to 10 m submergence
PTC 130°C thermistors (for thermal protection)
High power factor $\cos \varphi$ 0.84
Separat oil chamber, turbine oil

Gear

Flange mounted planetary gear,
Reduction ratio $i = 5.35$
Longlife gear oil
Oil change after 8,000 operating hours

Cable

Pressed cable gland, cable standard length 10 m
Cable 4 x 10 + 4 x 1 mm², \varnothing 26 mm,
Resistant against biomass
Strain relief 800 N

Corrosion protection

Ductile cast iron housing (GGG40)
Agitator has an two component epoxy coating
Agitator is galvanically isolated from the guide mast

Propeller

3-blade high efficiency propeller, dynamically balanced
Optimix 3G | 25 kW | propeller HD+ 900 | 275 rpm
Standard is hardened steel, optional ss304

Guide mast connection

Guide mast support with 4 rollers for smooth height adjustment:
25 kW: 120 / 150 mm square mast

Bearing

Bearing flange with mechanical seal SiC/SiC
2 Tapered roller bearings to absorb the axial thrust
Shaft \varnothing 45 mm
Separat oil chamber, Longlife gear oil

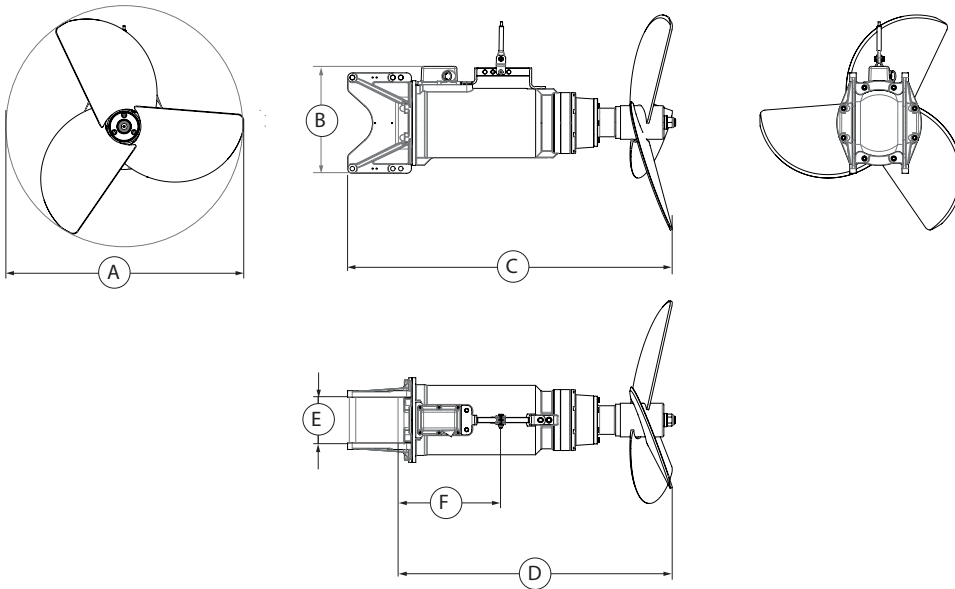
Ex zone

Authorized for Ex-Zone 2
ATEX Classification $\text{CE} \text{ Ex II 3G Ex nAck IIA T3 Gc}$

Control switch (optional)

Soft start or frequency converter

Submersible motor OPTIMIX 3G 250-270



Dimensions

Type	A [mm]	B [mm]	C max. [mm]	D [mm]	E [mm]	F [mm]					
3G 250-270	900	400	1,280	1,100	150 (120)	370					

Technical data

Type	Rated Power [kW]	Rated Voltage [V]	Full load current [A]	Frequency [Hz]	Power factor $\cos \varphi$	Gear reduction ratio	Propeller speed [rpm]	Propeller diameter [mm]	Axial force [kN]	Flow velocity [m/s] *	Pumping rate [m ³ /min]	Weight approx. [kg]
3G 250-270	25.0	400	48.0	50	0.84	5.35	270	900	4.5	3.6	134	260

Subject to technical changes

* measured in water and 1.2 m distance